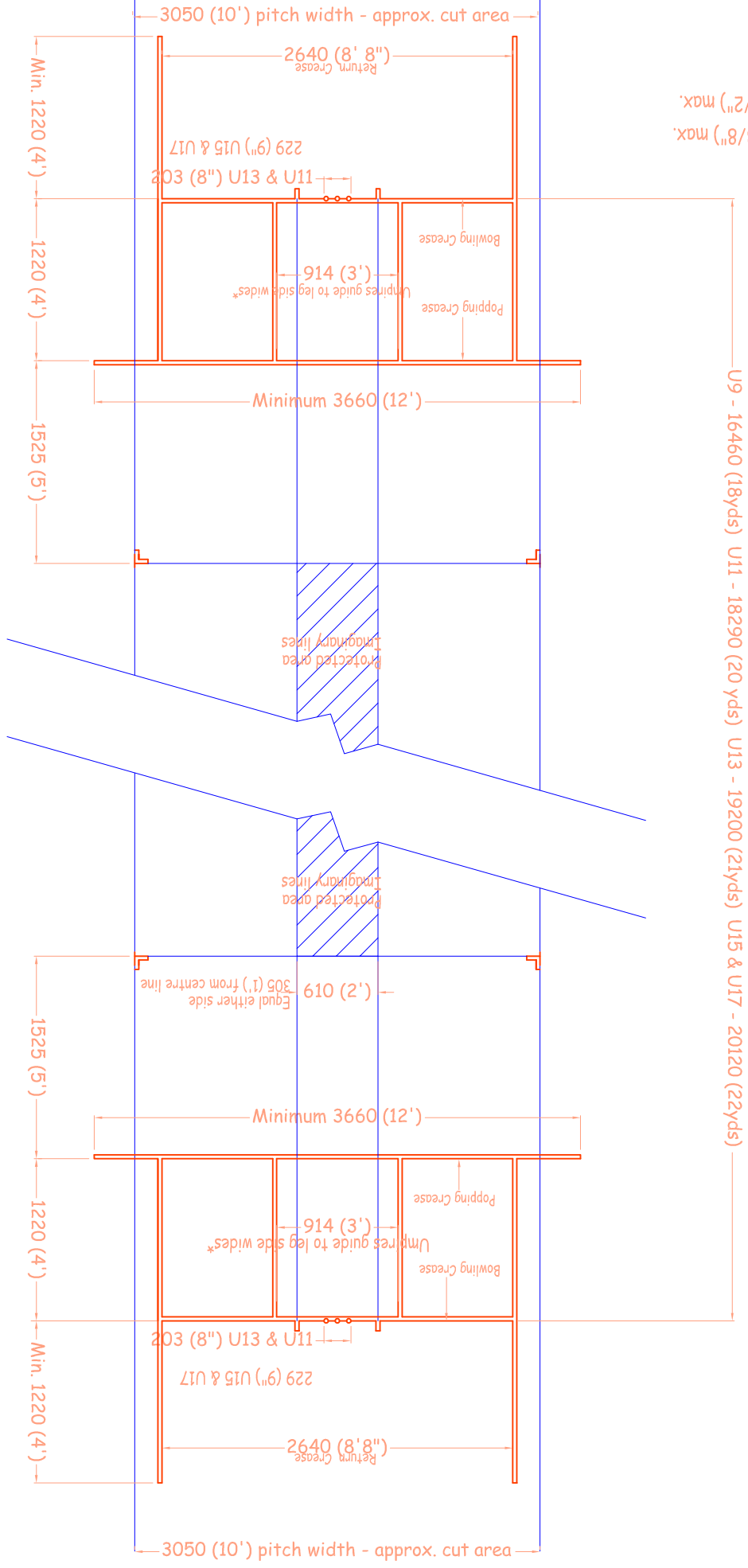


**SOUTH DEVON YOUTH CRICKET LEAGUE
PITCH MARKINGS, STUMPS, BALLS
& BALLS**

FEBRUARY 2012



U11 & U13 - 3 No: stumps 686 (27") high x 35 diam.(13/8") max.
 U15 & U17 - 3 No: stumps 711 (28") high x 38 diam.(11/2") max.
 U11 & U13 - 2 No: balls overall length 96.8 (3 13/16")
 U15 & U17 - 2 No: balls overall length 109.5 (4 5/16")

NOTES:

Crease marking line width to be between 6 (1/4") & 50 (2")

The 4 lines indicating the protected pitch area, are not obligatory, but a help to the umpires.

The two lines between the bowling and popping creases are constant on LEG SIDE widths

* These lines can be shorter - say 300mm forward from bowling crease

Match cricket balls - new or nearly new - U11 & U13 - 4 11/16 to 5 1/16 oz -- U15 & U17 - 5 1/2 to 5 3/4 oz (Junior)

(Senior)

Not to scale

IWW - Feb 2007