



Hertfordshire Cricket

Disability Cricket Strategy 2015 - 2019



Table of Contents

Introduction	3
Insight.....	3
Impairment Groups.....	3
Physical and Learning Disability	4
Deaf and HI.....	4
Blind and VI	5
Focus Group	5
Schools & Colleges	5
Implementation	5
Targets	6
Year 1 - 2015 / 2016.....	6
Year 2 - 2016 / 2017	6
Year 3 - 2017 / 2018.....	6
Year 4 - 2018 / 2019.....	6
Infrastructure	7
Funding	8
SWOT Analysis.....	9
Strengths	9
Weaknesses	9
Opportunities	9
Threats	9
Disability Cricket Proposed Pathway in Hertfordshire.....	10
Hertfordshire Cricket Disability Action Plan - 2015 - 2019	11
Hertfordshire Disability Cricket Hub Strategy.....	14
Appendix 1	15

Introduction

The Hertfordshire Cricket Board recognises the right of all people with a disability to participate in and enjoy access to the game of cricket, whether at school, in clubs or in the community.

In Hertfordshire there is a large untapped population of people with disabilities who should be given the opportunity to get involved in cricket. It may be that playing the game is only part of that. Opportunities need to be made for people to officiate as umpires or scorers, volunteer to help with ground work, help to prepare catering etc..

There are 159,848 disabled people in Hertfordshire which represents 14% of the total county population (2011 Census).

Hertfordshire does in fact boast a higher proportion of disabled people playing sport at least 30 minutes each week (22.2%) compared to the region (East 18.5%) and the national average(18.3%). (Active Peoples Survey 2011 - 2012)

Hertfordshire has the lowest percentage of disabled people not participating in sport (66.7%) compared to the region (East: 69.3%) and nationally (70.7%) (Active Peoples Survey 2011 -2012)

Based on these figures alone there is approximately 107,000 disabled people in Hertfordshire who do not participate in sport. This in itself represents a huge opportunity for cricket to increase levels of participation in our game substantially.

Insight

It is neither practical or possible to expect the cricket board to reach all of these people. Indeed, many will be of an age where they will find no benefit from our game, and based on that our insight has been lead by what we feel we can realistically achieve.

This insight will not only cover the potential player aspects, but also the current structure in place for delivery, including coaches and other workforce issues

Impairment Groups

Breaking the market down into specific impairment groups gives us a starting point as to where our efforts should lie. On the basis that this is a plan for the next four years, we have laid out a timeline for implementation of all aspects later in this document to cover all identified areas.

The impairment groups can be nominally listed as:

- Physical Disability
- Learning Disability
- Blind or Visual Impairment
- Deaf or Hearing Impaired
- Mental Health Issues

Physical and Learning Disability

Research work has discovered that a whole network of Adult Day Care centres exist in Hertfordshire, broken into local government boroughs. The ADC Centres cater for adults predominantly with learning disabilities, however there are also people with physical disabilities in attendance also.

Appendix 1 will list the discovered day care centre resources in the county.

Working in this environment with adequate facilities and resources (coaches and halls or playing areas) will realise a huge number of people getting access to our game. (See forecast figures in *appendix 1*)

There are also a number of residential homes within the county that house service users with learning and / or physical disabilities and these environments should also be explored for potential. (*Appendix 1* lists the known residential houses for people with disabilities)

The needs and outcomes of working with these two market areas is vast and should not be underestimated. Providing team sport activities (cricket in our case) will produce outcomes for the participants outside of any cricket outcomes, some of which will be life changing.

Cricket needs to recognise that its ROI for disability cricket is generally not about performance. An opportunity needs to exist for the performance end of the demography, however, it should not be looked upon as core.

The core is to provide opportunities for people to access our game with an outcome that results in improvement in health, well-being, self esteem, new skill learning, sense of achievement, empowerment and above all else fun!

Deaf and HI

The sensory impairment groups will require a deeper level of understanding and will also require a heavily weighted offer in collaboration with a number of key strategic partners.

For example, the Deaf and hard of hearing market have specific needs in terms of communication and in general deaf or hard of hearing people do not consider themselves to be disabled.

Working with resources, clubs and facility providers to make their offers 'deaf friendly' and their staff 'deaf aware' would be the plan of action for this sector.

By doing this it, it will encourage deaf and hard of hearing people to consider taking part knowing that there will be a facility and people who will be able to communicate with them and in time, for them to build the confidence that cricket is the choice for them.

This is a very different approach to working with physical and / or learning disabled people.

There are a few deaf specific schools available, however 70% of deaf or hard of hearing students attend main stream schools now and the provision for sport needs to mirror that offer in the mainstream sporting environment. (*Appendix 1* shows a list of deaf specific groups and organisations to work with)

Blind and VI

A number of barriers exist that prevent sport participation by visually impaired people. These include, lack of information and inaccessible content, travel barriers such as expense and lack of sighted guides, timings of activities not in line with public transport, personal opinions of self, protective families, availability of adaptive equipment and accessible and suitable facilities.

This list is by no means exhaustive, however, these considerations are those that prevent visually impaired people from playing our sport and ones which, if we are to succeed, we have to address.

As with deaf people, we have to ensure we work in collaboration with key strategic partners in providing opportunities for visually impaired people in the right way. (*Appendix 4* lists VI or blind groups and organisations to explore)

Mental health is an area that may or may not sit within the disability camp, however in Hertfordshire we are looking to work with this vulnerable group to provide an opportunity to play our game and create some therapeutic opportunities for the service users.

We will work closely with the NHS in Hertfordshire to develop this area. Our insight has discovered that there are eight mental health units in the county and our plan is to work with them all with a view to develop a Herts MH Cricket league and festival in the future.

Focus Group

In order to make our disability programme a success it is envisaged that a quarterly focus group should be formed. This will include any interested party in progressing the disability cricket provision, whether it be in schools, SEN schools, day care centres, residential houses, sensory groups etc. The focus group will allow swapping of ideas in the name of development.

Schools & Colleges

Working with and in schools is a vital part of the overall plan however, it should not be seen as the complete offer. Discovery work, in partnership with schools SENco's and sports officers should allow us to identify children in mainstream schools with a disability who may want to take part in cricket.

Likewise, working with SEN Schools in a different, more unique way and with parents of children in SEN schools should result in allowing us to create curricular opportunities with adaptive cricket and table cricket and extra-curricular sessions with their support.

FE Colleges and the University are also potential sources of players, coaches and helpers etc and working closely with Herts CSP it should allow us to reach any potential market.

Implementation

Having identified the target markets and the beginning of how the different groups and environments work, we need to be able to understand the constituent parts of the implementation in order to ensure that we are in a strong position to meet our forecasted targets over the four year period.

Targets

Year 1 - 2015 / 2016

- Work in 6 Adult Day Care Centres, ideally in 6 of the 10 district boroughs in the county
- Engage with 15 people in each centre one a fortnight for 12 months
- Proposed footfall over 12 month period = **15x6x26 = footfall of 2340**
- Culminate with a Day Care Cricket Festival at a mainstream club
- Continue to work with MLD groups in FE Colleges delivering adaptive cricket
- Proposed footfall over 12 month period = **12x2x26 = footfall of 624**
- Work with the SEN Schools network in delivering adaptive cricket and table cricket
- Work with NHS Mental Health Units in Herts to increase participation
- Continue to develop the performance squad in the national competitions

Year 2 - 2016 / 2017

Continue with all above except:

- Increase working in Adult Day Care Centres to 10, one in each district borough
- Proposed footfall over 12 month period = **15x10x26 = footfall of 3900**
- Work in collaboration with UK Deaf Sport to create 4 deaf friendly cricket clubs
- Train 8 people within those clubs to be 'deaf aware'.
- Run 2 Deaf Friendly cricket taster sessions
- Create 2 centres in Herts for VI Cricket sessions
- Create a CP Sport Community Table Cricket League

Year 3 - 2017 / 2018

In addition to year 2:

- Create a 'Deaf Specific' representative team for national competitions
- Create a VI Specific representative team for national competitions
- Create a County Wide 'club' level competition between the Day Care Centres
- Create a County Wide 'Club' level competition between the Mental Health Units

Year 4 - 2018 / 2019

- Continue to deliver structured sessions within the Day Care Centre and residential environment

- Continue to work with strategic partners and groups (*Appendix 1*) in order to build a robust and sustainable disability cricket network

Although the plan may look ambitious it is perfectly achievable with all of the right components in place. These components are:

- Herts Cricket Board
- Hertfordshire Disabled Cricket Association
- Hertfordshire County Sports Partnership
- UK Deaf Sport
- British Blind Sport
- EFDS
- Wheelpower
- Limbpower
- School Network
- SEN Schools Network
- FE Colleges
- University
- Hertfordshire County Council
- Hertfordshire NHS Trust
- Mainstream Cricket Club Network
- Hertfordshire Association of Cricket Officials
- Mencap
- Leonard Cheshire

Infrastructure

Delivery of the plan will be carried out predominantly by cricket coaches, support and care workers and other volunteers.

Resource needs to be identified within Herts Cricket and Herts Disabled Cricket Association for cricket coaches and for the training and up skilling of new coaches and activators.

Funding

In order to deliver all of the above funding will need to be sought. Initially the ring-fenced funding received by Herts Cricket via ECB's Sport England award should be used to carry out the implementation. This is in the area of £10,000 per annum for the next three years.

Additional funding streams need to be identified and explored for further opportunities. This can be researched with the help of Herts CSP

Further opportunities already used and available for use in the future are:

- Hertfordshire Community Foundation
- Activate Funding
- Sport England Small Grants Fund
- Local County Councillors
- Benefits in kind from various sources

SWOT Analysis

Strengths

Skilled, enthusiastic and dedicated workforce

Wide range of offers to provide for players of all ages, needs and ambitions

Offer also includes training, leadership and officiating opportunities

Backing of National governing body (ECB)

Willingness of the community to engage

Weaknesses

Lack of brand awareness of Hertfordshire cricket and its disability cricket offers and services

Disability cricket exclusive workforce numbers are small in comparison to demand

Track record of delivery of disability cricket is relatively short

Some relationships with schools and other DPO's are at an early stage of development

Time and resources available to be able to implement all programmes to the highest quality are limited

Opportunities

Largely untapped network of clubs with potential volunteer workforce and facility potential

Implementation of robust and sustainable disability cricket pathways in the county

To have Hertfordshire players representing the region and country

Surge in post 2012 Paralympics disability sport participation to include cricket

Threats

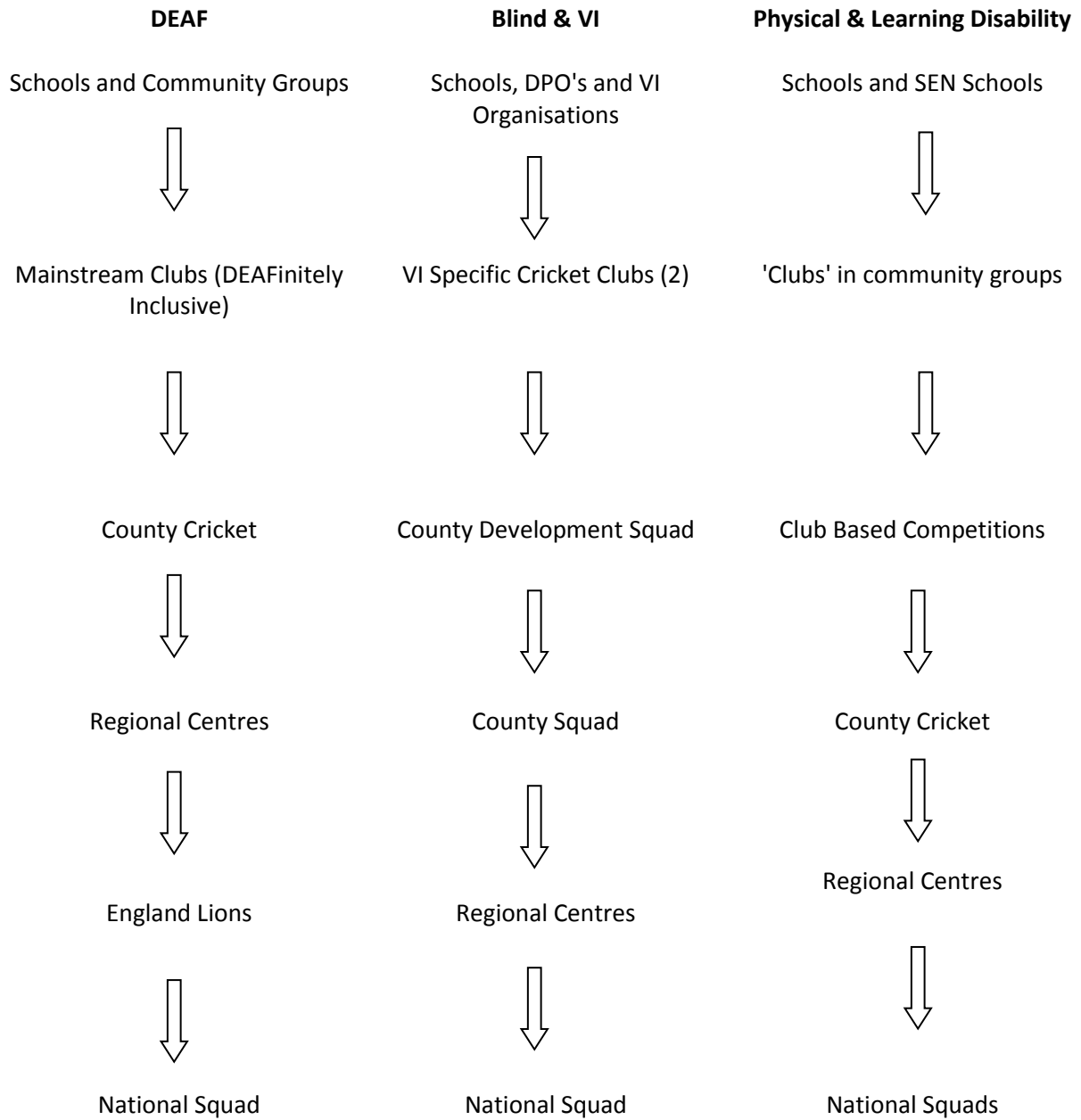
Rise in profile of other disability sports competing for the same market

Reputational damage to cricket / disability cricket

Staff / workforce moving on

Reduction in funding available for disability cricket

Disability Cricket Proposed Pathway in Hertfordshire



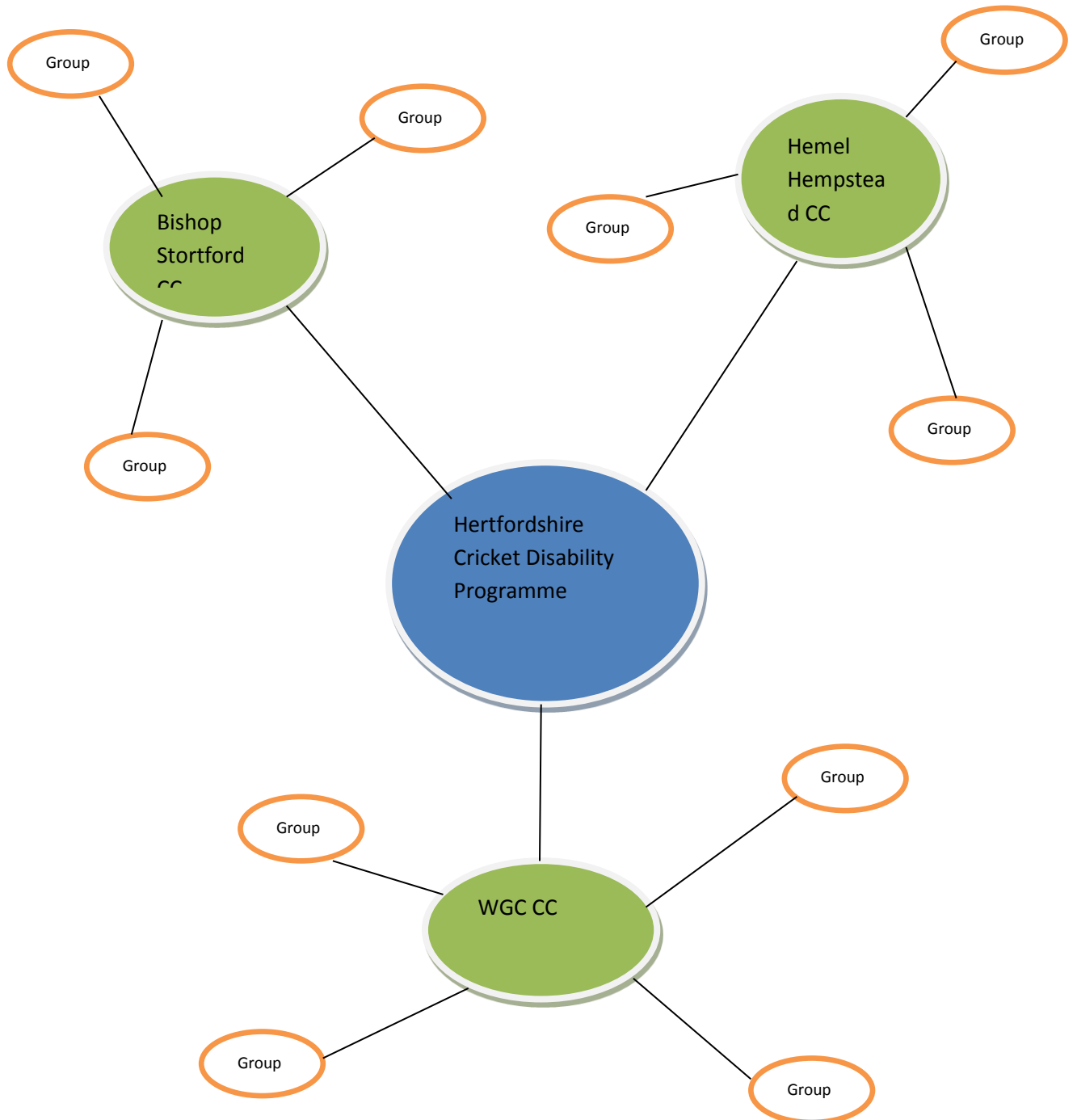
Hertfordshire Cricket Disability Action Plan - 2015 - 2019

Output	Offer	Route to Market	Delivery	Monitoring & Evaluation	People	Partners	Resources	Outcomes
Disability Cricket Workforce Development	ECB's DIT (Disability Inclusion Training) courses available to all Hertfordshire based cricket coaches and officers	Clubs, Schools, Herts Cricket Board Coaches and Coach Education candidates	Inclusion club-hub toolkit; Disability Inclusion Training Courses	Increase the number of coaches, helpers and leaders able to deliver disability cricket sessions	Coach Education, Herts Coaches Association, lead CDO and CDM and Coach Education Tutors	EFDS; ECB; UK Deaf Sport; British Blind Sport	Training and course resources, disability inclusion training tutors via ECB. Course promotional material	More people trained to deliver disability cricket sessions to disabled players
Table Cricket Tutor Training	Offer a number of courses for coaches wishing to deliver and run table cricket sessions	Clubs, Schools, Herts Coaches Association, University Sports Science and coaching students; day care workers and support staff	Table Cricket self run courses and workshops	Increase the number of 'active' table cricket coaches in Herts	Coach Education; Herts Coaches Association;	CDM; Schools SEN Schools Community Groups; CP Sport Lords Taverners.	Training and course resources;	More people trained to deliver table cricket sessions in schools and community groups
Disability County Coach Inset Workshops	Training for coaches involved with the disability county performance squads	Disability performance squad coaches	Inset days for county disability performance squad coaches	Disability performance squad coaches with a wider more in-depth knowledge of the game	Herts performance coaches and others with disability specific coaching expertise	Herts Disabled Cricket Association; ECB	Training materials and resources dependant on the training needs identified. Tutors, trainers or experiences coaches.	Create a small network of disability performance level coaches within the county

Disability Community Cricket Hubs	Mainstream cricket clubs geographically situated to become recognised hubs for disability cricket delivery	Mainstream Cricket Clubs	Herts disability coaches using community based sites for disability cricket session delivery	An increase in the number of places being used for disability cricket in local communities	Local councils, Adult day care and residential centres, coaches	Mainstream Cricket Clubs; local council facilities, leisure facility providers	Mainstream cricket club environments and facilities	Bookings at disability cricket venues for festivals and competitions or taster sessions
DEAFinitely Inclusive Clubs and facilities	Mainstream Cricket Clubs, leisure Centres	Mainstream Clubs,; Herts Cricket; Herts Disabled Cricket Association	Herts Disabled Cricket association; UK Deaf Sport	An increase in the number of deaf or HI people into mainstream cricket clubs	Herts Cricket; Herts Disabled Cricket; UK Deaf Sport	Herts Cricket; Herts Disabled Cricket; UK Deaf Sport	UK Deaf Sport training and resources	Increases number of deaf or HI people engaging with cricket
Disability Cricket Volunteer Recruitment	Opportunities for new volunteers to find out about volunteering within one of Herts Crickets' disability cricket programmes	Clubs, DPO's Schools, Colleges, Day care or residential centres; NDSO's	An open event for people interested in volunteering within disability cricket programmes in Hertfordshire	A greater number of active volunteers involves in Herts disability cricket programmes in varying roles	Herts Cricket workforce and volunteer lead, CDO's	Herts County Council, Cricket Clubs	Hertfordshire Disability Cricket information handouts, venue and hospitality for volunteer evenings. Herts cricket giveaways	Increase the number of active volunteers in our game
Disability Cricket Inclusion Manual	A booklet containing all information about Hertfordshire's disability cricket plans and programmes, products and offers	All stakeholders	Collation of all information and detail regarding programmes and offers prior to production of booklet	Increased awareness of all stakeholders of Herts Disability cricket programmes	Disability Cricket Manager, CDM, Herts Board members	Hertfordshire Cricket	Design to present compiled information in an electronic document and a high quality handout	

Herts Disabled Cricket Awards	Awards evening for all disability cricket participants, coaches, schools, officials and parents	Herts disability cricket squads, community groups, parents, players, officials, coaches etc	Organisation and delivery of an evening to reward all involved with a disability for their efforts and outstanding achievement	Increased satisfaction around recognition and reward amongst all involved	Herts Board members, Disability Cricket Manager, disability coaches	Hertfordshire Cricket	A Hertfordshire Cricket Club with accessible facilities and provision	A motivational evening for all that attend, plus heightened recognition for disability cricket
Hertfordshire OSCA's	Reward for people for their contribution to Hertfordshire Cricket at the annual presentation	HCCC, Cricket Clubs, Disability Networks, schools etc	Encouraging and including disability cricket nominations from OSCA nominees across all award categories	Contributions to Herts Cricket disability cricket recognised at Herts OSCAs	Herts Board members, Disability Cricket Manager, disability coaches	Hertfordshire Cricket	Management of nomination process for disability cricket award categories.	Highted recognition of a personal achievement for disability cricket

Hertfordshire Disability Cricket Hub Strategy



Appendix 1

Name	Address 1	Address 2	Address 3	Address 4	Post Code
Hailey Hall	Hailey Lane	Hertford	Herts		SG13 7PB
Broxbourne Organisation For The Disabled	Blackwood Court	Groom Road	Turnford	Herts	
Dacorum Talking Newspaper	c/o Social Centre for the Blind	6 Alston Road	Boxmoor	Hemel Hempstead	HP1 1QU
Aspergers Syndrome and High Functioning Autism Support Group (St Albans)	Herts NAS Resource Centre	Boxmoor House	Hemel Hempstead	Hertfordshire	HP3 0DF
Dacorum HCS LD Day Service	The Jarman Centre	Old Crabtree Lane	Hemel Hempstead	Herts	HP2 4JW
Dacorum Mencap	Dacorum Mencap Local Office	44B High Street	Hemel Hempstead	Herts	HP1 3AE
Optimum Physiotherapy Hemel Hempstead	Breakspear Park	Breakspear Way	Hemel Hempstead	Herts	HP2 4TZ
Out & About	Vitalia House	Paadise	Hemel Hempstead	Herts	HP2 4TF
Puffins. Dacorum Sports Club for the Disabled, The (Hemel Hempstead)	Hemel Hempstead Sports Centre	Park Road	Hemel Hempstead	Herts	HP1 1JS
Herts Homecare	123 Lawn Lane	Hemel Hempstead	Hertfordshire		HP3 9HS
Haywood Grove School	St. Agnells Lane	Hemel Hempstead	Herts		HP2 7BG
Mencap Hemel Hempstead	48 High Street	Hemel Hempstead	Herts		HP1 3AF
MH Physio	28 Peartree Road	Hemel Hempstead	Herts		HP1 3QW
Northridge Way Physiotherapy Clinic	280 Northridge Way	Hemel Hempstead	Herts		HP1 2AU
The Collett School	Lockers Park Lane	Hemel Hempstead	Herts		HP1 1TQ
Woodfield School	Malmes Croft	Hemel Hempstead	Herts		HP3 8RL
Middleton School	Walnut Tree Walk	Ware	Herts		SG12 9PD
Pinewood School	Hoe Lane	Ware	Herts		SG12 9PD
Mencap Bishops Stortford	Grove Cottage	151 London Road	Bishop Stortford	Herts	CN23 3JX
Bishop's Stortford Learning Disabilities Forum	Rhodes Centre	South Street	Bishop's Stortford	Herts	CM23 3JG
East Herts HCS LD Day Service	Drill Hall (Rear Entrance)	178 Crossbrook Street	Cheshunt		EN8 8JY
iGoPhysio Hertford	Pennington Tylers Causeway	Newgate Street	Hertford	Herts	SG13
The Physio Room Hertford	Prince of Wales House	Bluecoats Avenue	Hertford	Herts	SG14
Hertford Disability Support Group (HDSG)	Carlton House	Sele Farm	Hertford	Herts	SG14 2ES
Origin Housing (Origin Choice)	69-75 Scott Road	Bishop Stortford	Hertfordshire		CM23 3QN

St Elizabeth's Centre	South End	Much Hadham	Hertfordshire		SG10 6EW
Amwell View School & Specialist Sports College	Stanstead Abbotts	Ware	Herts		SG12 8EH
Bishop's Stortford Day Service	Windhill	Bishop's Stortford	Herts		CM23 2NF
East Herts HCS LD Day Service	60 Brocket Road	Hoddesdon	Herts		EN11 8NF
East Herts HCS LD Day Service	106 Park Road	Ware	Herts		SG12 0AW
Guideposts Trust (Ware)	82a High Street	Ware	Herts		SG12 9AT
Hertford and District Gateway	102 Turners Hill	Cheshunt	Herts		EN8 9BN
The Barnes Physiotherapy Practice Hertford Limited	3a Railway Place	Hertford	Herts		SG13
Sawbridgeworth Self Help Group for Visually Handicapped	Reedings School	Bullfields	Swabridgeworth	Herts	
Mencap (Hertford and District)	Hertford Regional College	Broxbourne Campus	Turnford	Herts	EN10 6AE
Hft Herts & Essex	Bradbury Resources Centre	Pound Lane	Ugley	Bishop Stortford	CM22 6HP
Hertford & District Mencap	102 Turners Hill	Cheshunt	Waltham Cross		EN8 9BN
Bishops Stortford and District Talking Newspaper					
Hertford and District Talking Newspaper					
We Do Care (Ware)	Contact Jacqui Williams, Director				
Falconer	Falconer Road	Bushey	Herts		WD23 3AT
Meadow Wood School	Cold Harbour Lane	Bushey	Herts		WD123 4NN
Hertsmere Mencap					
Scope	PO Box 833	Milton Keynes	Bucks		MK12 5NY
Limbless Association	Unit 16 Waterhouse Business Centre	2 Cromar Way	Chelmsford	Essex	CM1 2QE
Prader-Willi Syndrome Association (UK)	125a London Road	Derby	Derbyshire		DE1 2QQ
Support 4 Sight	2 & 4 George Street	Saffron Walden	Essex		CB10 1EQ
Accuro (Care Services)	Unit 1, Hastingwood Business Centre	Willow Place	Hastingwood	Harlow	CM17 9JH
British Amputee and Les Autres Sports Association (National)	63 High Street	Loscoe	Heanor		DE75 7LG
Prosthetic and Amputee Rehabilitation Centre	Brockley Close	Stanmore	Middlesex		HA7 4LP
Active Assistance	3rd Floor	1 Suffolk Way	Sevenoaks	Kent	TN13 1YL
Restricted Growth Association	RGA Office	PO Box 15755	Solihull		B93 3FY
British Polio Fellowship	Eagle Office Centre	The Runway	South Ruislip	Middlesex	HA4 6SE
ASPIRE	Aspire National Training Centre	Wood Lane	Stanmore	Middlesex	HA7 4AP
Meningitis Trust, The	Head Office: Fern House	Bath Road	Stroud	Gloucestershire	GL5 3TJ

Headway Hertfordshire	30 Campus Five	Letchworth	Hertfordshire		SG6 2JF
Headway Hertfordshire	30 Campus Five	Letchworth	Hertfordshire		SG6 2JF
Herts Multiple Sclerosis Therapy Centre Ltd	30 Campus Five	Letchworth	Hertfordshire		SG5 2JF
Orchard House (Letchworth)	Spencer Way	Letchworth	Hertfordshire		SG6 4RY
The Linkage Group	12 Horn Hill	Whitwell	Hertfordshire		SG4 8AS
Brandles	Weston Way	Baldock	Herts		SG7 6EY
Woolgrove School	Pryor Way	Letchworth	Herts		SG6 2PT
Leonard Cheshire Disability (Hitchin)	Symonds House	2 Lavender Fields	Hitchin	Herts	SG5 2JB
Parkinson's UK (North Herts and Stevenage Branch)	St John's Community Centre	St John's Road	Hitchin	Herts	
Physio for Women	49 Prince Charles Avenue	Stotfold	Hitchin	Herts	SG5 4PN
Gateway Club - Part of Mencap (Hitchin and Letchworth)	Catholic Church Hall	Nighthtingale Road	Hitching	Herts	SG5 1QS
Breakaway Saturday Club (North Herts CVS)	Mrs Howard Hall	Norton Way South	Letchworth	Herts	SG6 1NX
Leisure Direct (North Hertfordshire District & Stevenage)	c/o North Herts District Council Offices	Gernon Road	Letchworth	Herts	SG6 3JF
Multiple Sclerosis Trust (Letchworth)	Spirella Building	Bridge Road	Letchworth	Herts	SG6 4ET
The Wellness Hub Limited	The Old Fire Station	13 North Bridge Street	Letchworth	Herts	SG17 5DQ
Yvonne Savage Club for the Visually Impaired (Letchworth)	Central Methodist Church Hall	Norton Way South	Letchworth	Herts	SG6 1BH
Leisure Direct		Letchworth			
Nuffield Health and Fitness St Albans	Letchworth Lane	Letchworth		Herts	SG6 3NP
Dimensions	Queen Elizabeth the Queen Mother Centre	Station Road	Bricket Wood	St Albans	AL2 3PJ
Batford Physiotherapy Centre	1 South View Road	Batford	Harpenden	Herts	AL5 5AW
Harpenden Gateway Club	Harpenden Youth Centre	Vaughan Road	Harpenden	Herts	AL5 1RG
Harpenden Mencap Society	Stairways	19 Douglas Road	Harpenden	Herts	AL5 2EN
Village Physiotherapy	The Village Surgery	Amenbury Lane	Harpenden	Herts	AL5 2BT
Workshops for Parents of Children/Adolescents with Aspergers Syndrome (Radlett)	Harper House Children's Service	15 Forest Lane	Harperbury, Shenley	Nr Radlett, Herts	WD7 9HQ
Springfield - Oaklands College (St Albans)	Oaklands College	St Albans Smallford Campus	Hatfield Road	St Albans	AL4 0JA
Redclyffe. Scope (Harpenden)	21 Salisbury Avenue	Harpenden	Hertfordshire		AL5 2QF
Action Harpenden Physiotherapy	2 Thompsons Close	Harpenden	Herts		AL5 4ES
Batchwood School	Townsend Drive	St Albans	Herts		AL3 5RP
Harpenden Osteopathic Practice	58 Tennyson Road	Harpenden	Herts		AL5 4BB

Healing Hands Physiotherapy	8 Oak Way	Harpenden	Herts		AL5 2NT
Heathlands School	Heathlands Drive	St Albans	Herts		AL3 5AY
Nuffield Health and Fitness St Albans	Highfield Park Drive	St Albans	Herts		AL4 0AH
Southdown Physiotherapy Centre	136A Southdown Road	Harpenden	Herts		AL5 1PU
The Elms Physiotherapy	24 Hall Place Gardens	St Albans	Herts		AL1 3SF
The Lakes Physiotherapy Clinic	15 Weybourne Close	Harpenden	Herts		AL5 5RE
Trinity Community Project (St Albans)	1 Beaconsfield Road	St Albans	Herts		AL1 3RD
Watling View School	Watling View	St Albans	Herts		AL1 2NU
Forest House Education Centre	Forest House Harper Lane	Shenley	Radlett		WD7 9HQ
Cherry Tree Housing Association Ltd	Orchard Villa	Portes Park Drive	Shenley	Hertfordshire	WD7 9DS
Healing in Motion	1a Canberra House	London Road	St Albans	Herts	AL1 1LE
Jersey Farm Day Care Centre (St Albans)	20 Harefield Place	Jersey Farm	St Albans	Herts	AL4 9JQ
Parkar Physio Care	Ginger Natural Health	44 London Road	St Albans	Herts	AL1 1NG
Perfect Balance	Fitness First	7 St Christopher Place Christopher Place Shopping Centre	St Albans	Herts	AL3 5DQ
Perfect Balance Clinic	Unit 17 Christopher Place		St Albans	Herts	AL3 5DQ
St Albans & District Mencap	Unit 5	181a Verulam Road Sherwood Avenue, Marshalswick	St Albans		AL3 4DR
St Albans Association for the Disabled	St Mary's Church		St Albans	Herts	AL4 9QA
St Albans Mencap	Unit 5	181 Verulam Road	St Albans	Herts	AL3 4DR
St Luke's School	Crouch Hall Lane	Redbourn	St Albans		AL3 7ET
St. Albans HCS LD Day Service	The Cunningham Hub	207 Cell Barnes Lane	St Albans	Herts	AL1 5PX
Harpenden Gateway Club					
Scope (St Albans and Region)	Contact Mrs S Bird, Secretary				
Special Olympics St Albans					
St Albans and District Talking Newspapers					
StopGap North	Swingate House	3rd Floor	Danestrete	Stevenage	SG1 5BA
Greenside School	Shephall Green	Stevenage	Herts		SG2 9XS
Larwood	Webb Rise	Stevenage	Herts		SG1 5QU
Lonsdale School	Webb Rise	Stevenage	Herts		SG1 5QU
The Valley School	Valley Way	Stevenage	Herts		SG2 9AB

Stevenage Resource Centre Day Service	Stevenage Resource Centre	Chells Way	Stevenage	Herts	SG2 0LT
Turning Point. Housing Link (Dacorum)	Office 1, 1 Higgins Walk	Hitchin Road	Stevenage	Herts	SG1 4YP
Breakspeare School	Gallows Hill Lane	Abbots Langley	Herts		WD5 0BU
Colnbrook School	Hayling Road	Watford	Herts		WD19 7UY
Garston Manor School	Horseshoe Lane	Watford	Herts		WD25 7HR
London Physiotherapy - Watford	53 Eastbury Road	Watford	Herts		WD19 4JN
Optimum Physiotherapy	54 Clarendon Road	Watford	Herts		WD17 1DU
Watford HCS LD Day Service	62 Queens Road	Watford	Herts		WD17 2QN
Rickmansworth Gateway Club	Shepherd Centre	Middleton Road, Mill End	Rickmansworth	Herts	WD3 8JF
Rickmansworth HCS LD day service	Middleton Road	Mill End	Rickmansworth	Herts	WD3 8JF
Watford Mencap	The Old Town Hall	105 High Street	Rickmansworth	Hertfordshire	WD3 1AN
DRUM. Disability Recreation Unity Movement (Watford)	Parkgate Community Centre	Southwold Road	Watford	Herts	WD24 7DP
Guideposts Trust (Watford)	Henry Smith House	3-5 Estcourt Road	Watford	Herts	WD17 2PT
PhysioWorld @ Abbots House Clinic	Abbots House Clinic	198 Lower High Street	Watford	Herts	WD17 2FF
StopGap South	Cranbourne House	10a Earl Street	Watford	Herts	WD17 2PD
Synergy Physio Ltd	18 Cassio Apartments	1 Malden Road	Watford	Herts	WD17 4EJ
Watford and District Mencap. The Hand in Hand Project	The Lemarie Centre	524 St Albans Road	Watford	Herts	WD24 7WF
Hornbeams Day Service	Briars Pavillion	Briars Lane	Hatfield	Herts	AL10 8EY
Perfect Balance	David Lloyd Hatfield	Mosquito Way	Hatfield	Herts	AL10
Hatfield Gateway Club	Jim Macdonald Centre	High View	Hatfield	Herts	AL10 8HR
Brookdale Care	14 Parkway	Welwyn Garden City	Hertfordshire		AL8 6HG
Garden City Day Service	108 Ludwick Way	Welwyn Garden City	Herts		AL7 3QE
harc - the Hertfordshire branch of the National Autistic Society (NAS)	PO Box 450	Hatfeld	Herts		AL10 1EU
Hatfield & Welwyn Physiotherapy	6 Ground Lane	Hatfield	Herts		
Hatfield Gateway Club	4 Thrush Avenue	Hatfield	Herts		AL10 8QU
Jim MacDonald Centre	High View	Hatfield	Herts		AL10 8HR
Physio23	7 Chantry Lane	Hatfield	Herts		AL10
Southfield School	Travellers Lane	Hatfield	Herts		AL10 8TJ
Therapy4All	4a Church Road	Welwyn Garden City	Herts		
Welwyn Hatfield Talking Newspaper (WHATNEWS)	160 Blythway	Welwyn Garden City	Herts		AL7 1DU

WGC Physiotherapy	High Street	Welwyn Garden City	Herts		AL7 4JS
Hertfordshire Action on Disability	Woodside Centre	The Commons	Welwyn Garden City	Hertfordshire	AL7 4DD
Hertfordshire Action on Disability	The Woodside Centre	The Commons	Welwyn Garden City	Herts	AL7 4DD
Hertfordshire Society For The Blind	The Woodside Centre	The Commons	Welwyn Garden City	Herts	AL7 4SE
Hornbeams Day Service	1 Woodcot Lane	off Ridgeway	Welwyn Garden City	Herts	AL7 2AD
Lakeside School	Stanfield	Lemsford Lane	Welwyn Garden City		AL8 6YW
Optimum Physiotherapy and Sports Medicine	Albany Chambers	26 Bridge Road East	Welwyn Garden City	Herts	AL7 1HL
Welwyn Hatfield HCS LD Day Service	1 Woodcote Lane	off Ridgeway	Welwyn Garden City	Herts	AL7 2FA
Knebworth Sports Club (also in Hatfield and Welwyn Garden City)					
Caretech Community Services Ltd	Metropolitan House	6th Floor	3 Darkes Lane	Potters Bar, Herts	EN6 1AG
Shine	ASBAH Eastern Region Office	ASBAH House	42 Park Road	Peterborough	PE1 2UQ
DEMAND	The Old Chapel	Mallard Road	Abbots Langley	Herts	WD5 0GQ
North Herts HCS LD Day Service	Greyslates Court	Weston Way	Baldock	Herts	SG7 6ER
CMG Outreach and Home Support	Catalyst House	720 Centennial Court	Centennial Park	Elstree	WD6 3SY
Douglas Bader Foundation, The	45 Dundale Raod	Tring	Hertfordshire		HP23 5BU
Douglas Barder Foundation	45 Dunsdale Road	Tring	Hertfordshire		HP23 5BU
Potters Bar Circle For The Blind	Furzefield Court Centre	Potters Bar	Herts		
Potters Bar Physiotherapy Practice	117 Church Road	Potters Bar	Herts		EN6 1EU
Radlett, Elstree, Borehamwood and Shenley Talking Newspaper	9 Watling Knoll	Radlett	Herts		WD7 7JH
Redbourn Physiotherapy Centre	21 High Street	Redbourn	Herts		AL3 7 LE
South Oxhey Day Service	Northwick Road	South Oxhey	Herts		WD19 6RS
Life Opportunities Trust (Kings Langley)	Hempstead House	1 Hempstead Road	Kings Langley	Herts	WD4 8BJ
London Physiotherapy - Barnet	11 East Barnet Road	Town Centre	New Barnet	Herts	EN4 8RR
Spinal Injuries Association	SIA House	2 Trueman Place	Oldbrook	Milton Keynes	MK6 2HH
South Herts Physiotherapy Clinic	Parkfield Medical Centre	23 Torrington Drive	Potters Bar	Herts	EN6 1QH
St John of God Hospitaller Services	Barry House	69-71 High Street	Potters Bar	Hertfordshire	EN6 5AS
The Ashdown Clinic	North Wing Salisbury House	81 High Street	Potters Bar	Herts	EN6 5AS
The Wyndham Centre	Hitchin Parkwood Health & Fitness	The Exchange	Queens Street	Hitchin	SG4 9TY
Radlett Lodge School (for Children with Autism)	The National Autistic Society	Harper Lane	Radlett	Hertfordshire	WD7 9HW
Optimum Physiotherapy and Sports Medicine	Fountain Court	2 Victoria Square	Victoria Street	St Albans	AL1 3TF

Advance Housing and Support Ltd	Advance Support	3 Witan Way	Witney	Oxon	OX28 6FH
Action for Children (Abbots Langley)					
Brainwave	Contact Ceri Collins, Regional Family Co-ordinator				
Frank Letts Blind Fellowship of Royston					
Hertfordshire Dyslexia Association					
Lea Valley Talking Newspaper					
Leonard Cheshire Disability Central Region					
Limb Loss Information Centre, The					
National Autistic Society					
Parkinson's UK (North & East Herts)					
Parkinson's UK (West Hertfordshire Branch)					
Royston & District Mencap					
Up on Downs (Down's Syndrome Support Group for families in Hertfordshire)	Contact Julie Evens (Chair)				